



## Product of EEGRAB

WishKey is an advanced plug-and-play key management system for access control manual rack key.

The contrast colours, smooth lines and modern look itself have entirely explained the definition of post-modernism and the stable, safe and rigorous corporate culture.





# Wish your key



- ① User, key and access management.
- ① Multi-language support
- ① Generate history and reports of users and keys.
- ① Sturdy, lightweight with long working life key tags
- ① LED light indication.
- ① No exposed hinges or obvious gaps.
- ① LED illuminated alarms and audible alarms.



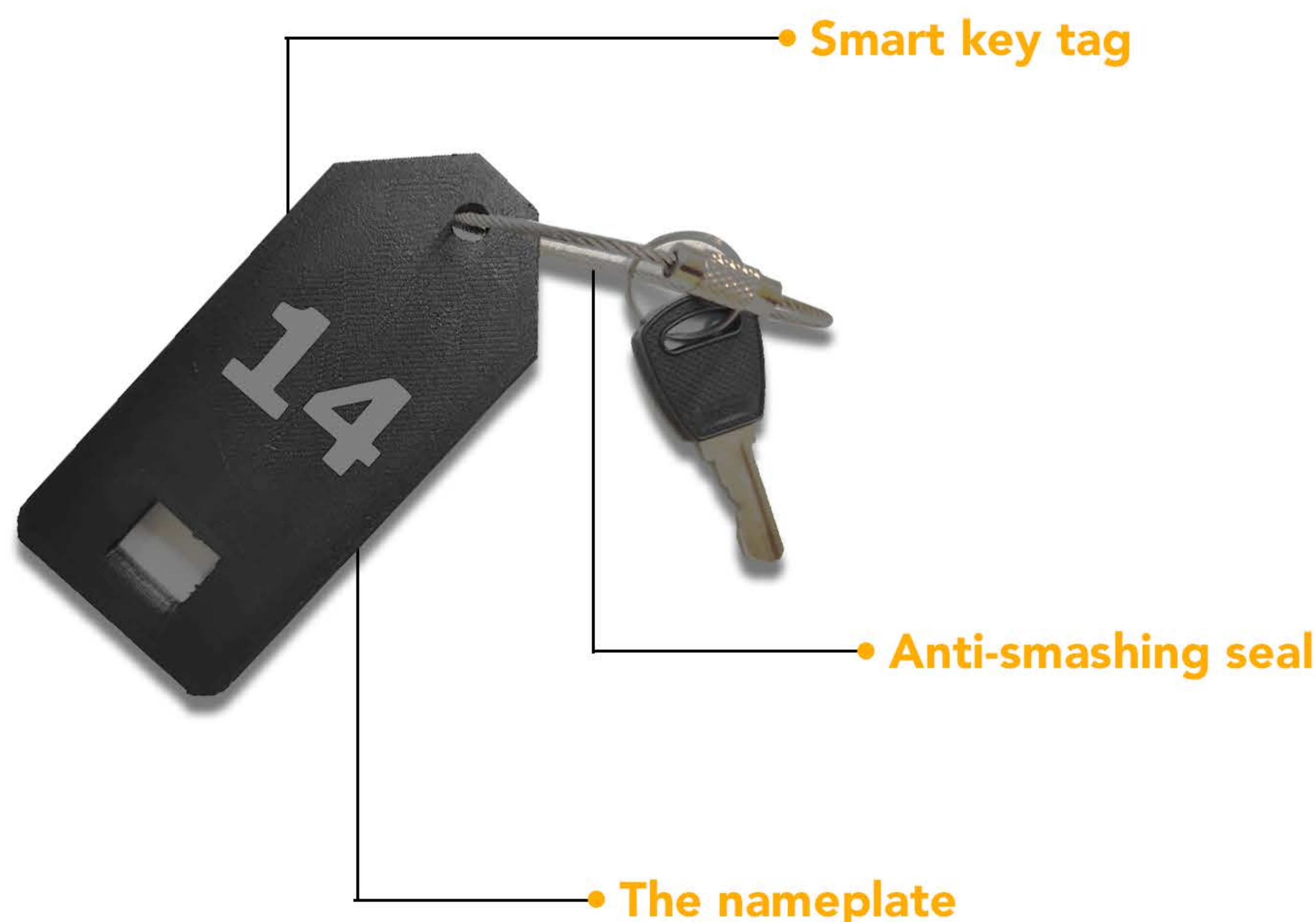
# WishKey

## Digital Key management solution

**Wishkey Key management system,** Wishkey is an advanced plug-and-play key management system. The RFID technology that applied is thoroughly combined with the Android system, integrating 30 keys as well as the miniaturisation design, making it more suitable for corporate usage. The contrast colours, smooth lines and modern look itself have entirely explained the definition of postmodernism and the stable, safe and rigorous corporate culture.

- Stand-alone plug-and-play solution, advanced RFID technology
- Android system, touch screen interface, easy to operate
- Access with SSO, RFID
- Standalone solution without need of Internet connection
- Quick installation, it can be put on the desk or fixed on the wall
- Backup battery optional





#### • **Control terminal**

The intelligent terminal is the control centre of the key cabinet. It adopts a 7-inch touch screen display. The application software is developed based on the Android platform, providing users with safe, intuitive and convenient human-computer interaction.

#### • **Mechanical lock**

Each intelligent key cabinet comes with two sets of mechanical keys, one can open the door, and the other can open the lining door. In case of emergency, the key can be manually released, and the key can be taken. The mechanical key is only used during system commissioning and emergency..

#### • **Card reading area**

RFID key and employee card scanning area



## Smart key tag

The smart key tag is the primary component of the key management system. It contains a microchip with a unique identification number, enabling the system to identify the key accurately. Its unique semi-circular contact ensures that once the keys are returned, and mechanically locked inside the slot.



## Anti-smashing seal

The use of the one-time anti-smashing seal, the smart key tag and the key is carefully combined from the structure; its non-destructive and non-removable design ensures higher reliability of the system.



## The nameplate

TAG area for marking key number.



## Key tag slot

The key tag slot can identify, monitor, lock and release the keys. Each slot has separate processing, storing and controlling unit built inside.





## Prerequisites of our solution:

- ⦿ Power supply with four adapters socket of Indian standard
- ⦿ Server with Ubuntu 16.4 – 4 core, 8 GB RAM and 500 GB HDD
- ⦿ Two Network point
- ⦿ Minimum space of 1.5\*1.5 SQFT
- ⦿ Active Directory synchronisation access permission
- ⦿ SSO API / URL in case direct consent is not feasible
- ⦿ SMTP if email confirmation required
- ⦿ Number of ports forward for SMS, heart bit monitoring of FADO system by FADO cloud





**EEGRAB**

Innovation & Creativity in use

ASTRA Tower, ASO 229, New  
Town, Kolkata – 700135, Near  
Akansha More, W.B, India



033-46041714



info@eegrab.com